



Specialty Glass Product Data Book

Contact Information

WEST COAST	Randy Coones Specialty Glass Manager	Phone: (509)787-1028 Mobile: (509) 760-7891 Fax: (509) 787-3967
MID WEST	Bob Bruns Regional Sales Manager	Phone: (972) 867-8379 Mobile: (972) 567-9452 Fax: (972) 519-0217
SOUTH EAST	Nick Barone Regional Sales Manager	Phone: (561) 912-1482 Mobile: (561) 654-9074 Fax: (561) 893-9753
NORTH EAST	Bruce McCord Regional Sales Manager	Phone: (203) 878-3586 Mobile: (203) 981-0239 Fax: (203) 878-3586
CANADA	Bernhard Ruhl Regional Sales Manager	Phone: (905) 707-9055 Mobile: (416) 706-1213 Fax: (905) 707-9995

General Glass International Corp.

101 Venture Way
Secaucus, NJ 07094
Phone: (800) 431-2042 (201) 553-1850
Fax: (201) 553-1851

Email: sales@generalglass.com
Website: www.generalglass.com

Specialty Glass Summary

Page #	Product	Thick
1	Polished Wire Stock Sheets	1/4"
1	Polished Wire Offcuts	1/4"
2	Diamond Cast Wire	1/4"
2	Georgian Cast Wire	1/4"
3	Matte Glass	1/8"
3	Matte Glass	3/16"
3	Matte Glass	1/4"
3	Matte Glass	3/8"
4	Stipolite	2.5mm
4	Stipolite	1/8"
4	Stipolite	5/32"
4	Stipolite	3/16"
4	Stipolite	1/4"
4	Stipolite	3/8"
5	Aqualite	5/32"
5	Aqualite	3/16"
5	Aqualite	1/4"
6	Masterglass	5/32"
6	Masterglass	1/4"
6	Masterglass	3/8"
7	Low Iron	1/4"
7	Low Iron	3/8"
7	Low Iron	1/2"
7	Low Iron	3/4"
8	Low Iron Acid Etched	1/4"
8	Low Iron Acid Etched	3/8"
8	Low Iron Acid Etched	1/2"
9	Satin Etched (Clear)	1/8"
9	Satin Etched (Clear)	3/16"
9	Satin Etched (Clear)	1/4"
9	Satin Etched (Clear)	3/8"
9	Satin Etched (Clear)	1/2"
9	Satin Etched (Clear)	3/4"
10	Satin Etched (2 Sided)	1/4"
10	Satin Etched (2 Sided)	3/8"
10	Satin Etched (2 Sided)	1/2"
11	Antique	1/8"
11	Antique	1/4"
11	Antique	3/8"
12	Thin Ribbed	5/32"

Page #	Product	Thick
12	Thin Ribbed	1/4"
13	Cross Reeded	5/32"
14	Reeded	5/32"
14	Reeded	1/4"
15	Satin Etched (BZ, Grey, Green)	1/4"
15	Satin Etched (BZ, Grey, Green)	3/8"
16	Satin Etched (Blue & Pink)	1/4"
16	Satin Etched (Pink only)	3/8"
17	Satin Etched Mirror	1/8"
17	Satin Etched Mirror	1/4"
18	Acid Etched Pattern Glass	5/32"
18	Acid Etched Pattern Glass	1/4"
18	Acid Etched Pattern Glass	5/16"
19	Monumental (Clear)	5/32"
19	Monumental (Yellow)	5/32"
20	Cotswold	5/32"
21	Flemish	5/32"
22	Minster	5/32"
23	Chinchilla	5/32"
24	Delta Frost	5/32"
24	Delta	5/32"
25	Glue Chip	1/8"
25	Glue Chip	3/16"
25	Glue Chip	1/4"
26	Niagara	3/8"
26	Niagara	3/16"
27	Warwick	5/32"
28	Mirror	1/4"
29	Clear Lami	1/8"
29	Clear Lami	1/4"
29	Clear Lami	3/8"
29	Clear Lami	1/2"
29	White Lami	1/4"
29	White Lami	3/8"
29	White Lami	1/2"
30	Clearview Denglas	
31	Clearview Waterwhite	
32	Flash	3/8"
33	Cast	3/8"
34	Bubbles	3/8"



Product Data Sheet

Product:

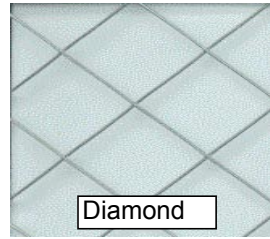
Polished Wire Glass

Type Codes:

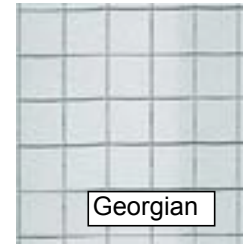
W1 Diamond W2 Georgian W6 Offcuts

Description:

1/4" fire-rated glass is widely used in schools and commercial applications. It is available in Diamond (Misco) and Georgian (Square) patterns. It is UL listed and can have a fire rating of up to 90 minutes depending on the size and application.



Diamond



Georgian

			Diamond		Georgian		
Thickness Code:			26		26		

Sizes/Packing

Diamond

Size	Pcs/case
48x100	26
60x100	24
60x130	18
78x100	18
78x130	14

Diamond Offcuts

Size	Pcs/case
30x78	50
30x100 *	26

Georgian

Size	Pcs/case
78x100	18
78x130	14

Packing:

4000 pound cases; 10-12 cases per container load.

Ports of entry:

New York and Houston, Texas. Others available by quotation.

Lead Time:

Allow 8 - 10 weeks for new production.

Stock Items:

As above. 48x100" and 60x100" are in limited supply.

New Items:

None

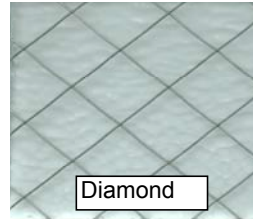
Prices:

Prices are delivered out of the warehouse, based on full mixed truckloads.

* Special Order required



Product Data Sheet



Product: **Cast Wire Glass**
Type Codes: **W4 Diamond W3 Georgian**
Description:

1/4" Obscure "rough" wire glass, comes in Georgian and Diamond patterns. The Diamond pattern is thicker (7.8mm) and has a rougher surface than the Georgian Cast which is nominal 6mm (1/4").

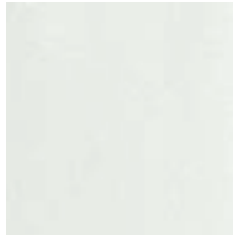
		Diamond		Georgian			
Thickness Codes:		27		27			

Sizes/Packing

Size		78x130		78x100			
Lites/Case		14		18			
Size				48x106_			
Lites/Case				26			
Size				48x87_			
Lites/Case				26			
Size				36x106_			
Lites/Case				26			
Size				36x87_			
Lites/Case				26			

Packing: 4000 pound cases; 10-12 cases per container load.
Ports of entry: New York and Houston, Texas. Others available by quotation.
Lead Time: Allow 8-10 weeks for new production.
Stock Items: Georgian and Diamond Cast Wire is stocked in both locations.
New Items: Diamond Cast Wire is now available in Tulsa and Secaucus, NJ.
Prices: Prices are delivered out of the warehouse, based on full mixed truckloads.

* Special Order required



Product Data Sheet

Product: **Matte Glass**

Type Code: MG

Description: Matteglass is acid etched float glass. It is a cost-effective replacement for ground glass or sandblasted. It can be tempered. The perimeter of the glass (1/4" all around) is clear glass, not etched. The matte finish is more opaque than satin etched; light transmission is 41% vs 85% for Satin Etched.

Available thickness:	1/8" (3.2mm)	5/32" _	3/16" _	1/4"	3/8" _	1/2" _	3/4" _
Thickness Codes:	45	54	56	25	33	34	38

Sizes/Packing

Size	63 x 88 1/2"		63 x 88 1/2"	63 x 88 1/2"	63 x 88 1/2"		
Lites/Case	60		35	30	18		
Size				88 1/2 x 126 _	88 1/2 x 126 _	88 1/2" x 126 _	88 1/2 x 126 _
Lites/Case				19	10		

Packing: 4000 pound cases; 10-12 cases per container load.

Ports of entry: New York and Houston, Texas. Others available by quotation.

Lead Time: Allow 8-10 weeks for new production.

Stock Items: 1/8" & 1/4" 63 X 88 1/2" are stock items in Tulsa and Secaucus, NJ. 3/16" is also available in Tulsa.

New Items: None

Availability: 88 1/2 x 126" in matte is subject to availability and minimum order requirement.

Prices: Prices are delivered out of the warehouse, based on full mixed truckloads.

* Special Order required



Product Data Sheet

Product: **Stipolite**
Type Code: PN PS
Description: Stipolite is similar to Pattern 62™ or Pattern P-516™.
 3/16", 1/4" and 3/8" Stipolite has been tempered successfully in USA.

Available thickness:	2.5mm	3.2mm	5/32" _	3/16"	1/4"	3/8"	1/2"
Thickness Codes:	44	14	54	56	25	33	

Sizes/Packing

Size	48x60	48x60	60x84	60x84		72 3/4x 177	
Lites/Case	160	72	57	50		12	
Size	36x60	36x60 _	57 x 88 1/2 _	57x88 1/2 _		51 x 86 1/2 _	
Lites/Case	213	178	50	46		26	
Size		60x84	78 3/4 x 126 _	78 3/4 x 126 _		72 x 96	
Lites/Case			29	23			

Packing: 4000 pound cases; 10-12 cases per container load.
Ports of entry: New York and Houston, Texas. Others available by quotation.
Lead Time: Allow 10 weeks for new production.
Stock Items NJ: 2.5mm, 3/16" and 3/8" in Secaucus, NJ; 1/8" and 3/16" in Tulsa.
Prices: Prices are delivered out of the warehouse, based on full mixed truckloads.

* Special Order required



Product Data Sheet

Product:

Aqualite

Code:

AQ

Description:

Aqualite is similar in appearance to Aquatex™ and Spraylite™. It can be easily tempered. It is used for patio furniture and shower doors as well as other applications.

Available thickness:	2.5mm _	1/8" _	5/32"	3/16"	1/4"	3/8"	1/2"
Thickness Codes:	44	45	54	56	25	33	34

Sizes/Packing

Size	48 x 60 _	48 x 60 _		60 x 84			
Lites/Case	160	72					
Size		36 x 60 _		57 1/8 x 88 1/2			
Lites/Case		178		50			
Size		36 x 60 _		72 x 96			
Lites/Case		178					

Ports of entry:

New York and Houston, Texas. Others available by quotation.

Lead Time:

Allow 10 weeks for new production.

Stock items:

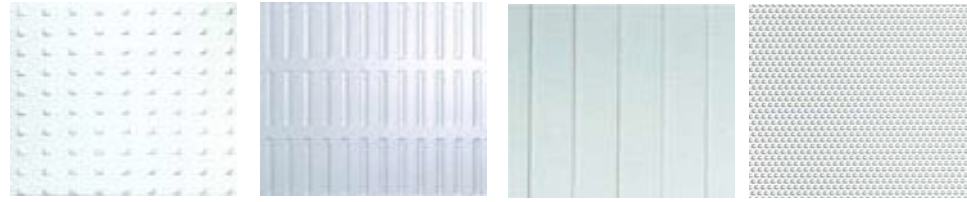
3/16" in Secaucus, NJ and Tulsa

Prices:

Prices are delivered out of the warehouse, based on full mixed truckloads.



Product Data Sheet



Product: **Masterglass**

Type Codes: Master Carre CM Master Ray RM Master Ligne LM Master Point PT

Description: 4 unique patterns available from Europe designed by an architect for architects. Diffuses light and separates space beautifully. Great for partitions and shower doors. Products available are Master Carre, Master Ray, Master Point, and Master Ligne. 3/8" only available in Master Carre.

Available thickness:	1/8"	5/32" _	3/16"	1/4"	3/8" _	1/2"	3/4"
Thickness Codes:	45	54	56	25	33	34	38

Sizes/Packing

Size		80x99 _		80x99	80x99		
Lites/Case		28		19	12		
Size		78 3/4 x 126 _		78 3/4 x 126 _	78 3/4 x 126 _		
Lites/Case							
Size		88 1/2 x 126 _		88 1/2 x 126 _	88 1/2 x 126 _		
Lites/Case							

Packing: 4000 pound cases; 10-12 cases per container load.

Ports of entry: New York and Houston, Texas. Others available by quotation.

Lead Time: Allow 8-10 weeks for new production.

Stock items: All four patterns in 1/4" and 3/8" only in Master Carre in Secaucus, NJ and Tulsa.

New Items: Master Lens. None on order yet.

Prices: Prices are delivered out of the warehouse, based on full mixed truckloads.

_ Special Order required
 __ Master Carre Only



Product Data Sheet

Product:

Low Iron

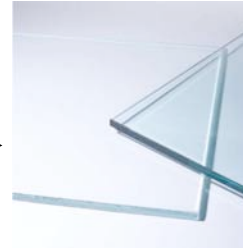
Thickness Code:

DV

Description:

Low Iron glass is extra clear glass, which is less green than normal float glass because it has a lower iron content. Many designers and consumers prefer this clear, less green look especially for higher end furniture and shower door applications.

See the Difference! →



Available thickness:	1/8"	5/32"	3/16"	1/4"	3/8"	1/2"	3/4"
Product Codes:	45	54	56	25	33	34	38

Sizes/Packing

Size				88 1/2" x 126	88 1/2" x 126	88 1/2" x 126	88 1/2" x 126
Lites/Case				19	13	9	5
Size				78 3/4 x 126 _	78 3/4 x 126 _	78 3/4 x 126 _	78 3/4 x 126 _
Lites/Case				22	15	10	6
Size							96" x 128" _
Lites/Case							-

Packing:

4000 pound cases; 10-12 cases per container load.

Ports of entry:

New York and Houston, Texas. Others available by quotation.

Lead Time:

Allow 8-10 weeks for new production.

Stock Items:

1/4", 3/8", 1/2" & 3/4" Diamante are in Tulsa stock.

1/4", 3/8", 1/2" Optiwhite and 3/4" Diamante are in Secaucus, NJ.

New Items:

None

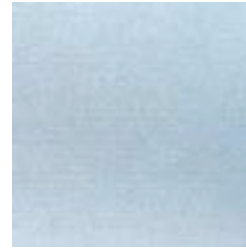
Prices:

Prices are delivered out of the warehouse, based on full mixed truckloads.

* Special Order required



Product Data Sheet



Product:

Low Iron Acid Etched

Type Code:

Description:

Acid etched low iron float glass with an extra smooth finish. Perfect for tempering and fabrication for commercial or shower door applications. The extra smooth finish is consistent throughout the sheet and does not pick up fingerprints, cutting oils, or cerium oxide. The perimeter of the glass (1/4" all around) is clear glass (not etched).

Available thickness:	1/8"	5/32"	3/16"	1/4"	3/8"	1/2"	3/4"
Thickness Codes:				25	33	34	

Sizes/Packing

Size				88 1/2 x 126"	88 1/2 x 126"	88 1/2 x 126"	
Lites/Case				18	11	-	
Size				78 3/4 x 126"	78 3/4 x 126"		
Lites/Case				21	12		

Packing:

4000 pound cases; 10 cases per container load.

Ports of entry:

New York and Houston, Texas. Others available by quotation.

Lead Time:

Allow 10 weeks for new production. Subject to availability of low iron glass.

Stock Items:

None

New Items:

None

Prices:

Prices are delivered out of the warehouse pricing, based on full mixed truckloads.

Technical Specs:

	1/4"
Light Transmission:	89.00%
Light Reflectance:	8.00%
Total Solar Energy Transmission:	88.00%
UV Transmission:	73.00%

* Special Order required



Product Data Sheet

Product:

Satin Etched (Clear)

Type Code:

BX

Description:

Acid etched clear float glass with an extra smooth finish - perfect for tempering and fabrication for commercial or shower door applications. The extra smooth finish is consistent throughout the sheet and does not pick up fingerprints, cutting oils, or cerium oxide. Satin Etched diffuses very well, and also has a high light transmission (about 84%), letting the light in. The perimeter (1/4" all around) is clear glass (not etched).

Available thickness:	1/8" _	5/32"	3/16" _	1/4"	3/8"	1/2"	3/4"
Thickness Codes:	45	54	56	25	33	34	38

Sizes/Packing

Size	63 x 88 1/2			63 x 88 1/2	63 x 88 1/2		
Lites/Case	56			30	18		
Size	88 1/2 x 126 _		88 1/2 x 126 _	88 1/2 x 126	88 1/2 x 126	88 1/2 x 126	88 1/2 x 126
Lites/Case	33		19	18	11	9	
Size	78 3/4 x 126 _		78 3/4 x 126 _	78 3/4 x 126 _	78 3/4 x 126 _	78 3/4 x 126 _	78 3/4 x 126 _
Lites/Case				21	12	10	7

Packing:

4000 pound cases; 10 cases per container load.

Ports of entry:

New York and Houston, Texas. Others available by quotation.

Lead Time:

Allow 8-10 weeks for new production.

Stock Items:

1/4", 3/8" and 1/2" are stock items in Tulsa and Secaucus, NJ.

New Items:

None

Prices:

Prices are delivered out of the warehouse, based on full mixed truckloads.

Technical Specs:

	3/16" _	3/8"
Light Transmission:	85.00%	84.00%
Light Reflectance:	8.00%	7.00%
Total Solar Energy Transmission:	81.00%	78.00%
UV Transmission:	56.00%	45.00%

* Special Order required



Product Data Sheet

Product: **Satin Etched (2 Sided)**

Type Code: **2B**

Description: Acid etched clear float glass with an extra smooth finish - perfect for tempering and fabrication for commercial or shower door applications. The extra smooth finish is consistent throughout the sheet and does not pick up fingerprints, cutting oils, or cerium oxide. Satin Etched diffuses very well. This product is Acid Etched on both sides opening up new design possibilities. The perimeter (1/4" all around) is clear glass (not etched).

Available thick:	1/8"	5/32"	3/16"	1/4"	3/8"	1/2"	3/4"
Thickness Codes:				25	33	34	

Sizes/Packing

Size				88 1/2 x 126	88 1/2 x 126	88 1/2 x 126	
Lites/Case				18	11	9	

Packing: 4000 pound cases; 10 cases per container load.
Ports of entry: New York and Houston, Texas. Others available by quotation.
Lead Time: Allow 8-10 weeks for new production.
Stock Items: 3/8" and 1/2" are now in stock
New Items:
Prices: Prices are delivered out of the warehouse, based on full mixed truckloads.

* Special Order required



Product Data Sheet

Product: Flash

Type Codes: FL

Description: Flash achieves a high-end casat look at a lower price point than most hand blown glass. It is used primarily for shower door and interior applications.

Available thick:		3/8"					
Light Tranmission:							
Thickness Code:		33					

Sizes/Packing

Size		60 x 96					
Lites/Case		21					

Packing: 4,000 pound cases; 12 cases per container load.

Lead Time: Allow 10 weeks for new production.

Stock Items: None

Prices: Prices are delivered out of the warehouse, based on full mixed truckloads.

* Special Order required



Product Data Sheet

Product:

Cast

Type Codes:

Description:

Cast provides a free-form pattern that is used primarily for shower doors and interior applications.

Available thick:		3/8"					
Light Tranmission:							
Thickness Code:		33					

Sizes/Packing

Size		73 x 130					
Lites/Case		11					

Packing:

4,000 pound cases; 12 cases per container load.

Lead Time:

Allow 2 weeks for new production.

Stock Items:

None

Prices:

Prices are delivered out of the warehouse, based on full mixed truckloads.

* [Special Order](#) required



Product Data Sheet

Product: **Bubbles**
Type Codes: **V1**
Description: Bubbles resembles water drops on glass.
 It is used primarily for shower doors and interior applications.

Available thick:		3/8"					
Light Tranmission:							
Thickness Code:		33					

Sizes/Packing

Size		67 x 150					
Lites/Case		9					

Packing: 4,000 pound cases; 12 cases per container load.
Lead Time: Allow 10 weeks for new production.
Stock Items: None
Prices: Prices are delivered out of the warehouse, based on full mixed truckloads.

* Special Order required



Product Data Sheet

Product:

Antique

Type Code

WW

Description:

Water-white German machine antique glass is perfect for use in shower doors and furniture. It is easily tempered and fabricated. Its beauty lies in its imperfections! This product is also known as Antique 75^m.

Available thickness:	1/8" _	5/32"	3/16"	1/4"	3/8"	1/2"	3/4"
Thickness Code:	45	54	56	25	33	34	38

Sizes/Packing

Size	39 x 59 _			63 x 83	63 x 83		
Lites/Case	38			11	6		
Size	59 x 63 _				63 x 94		
Lites/Case	23				5		

Packing:

Small cases weighing only about 1400 pounds each. (3 cases equals one heavy case).

Ports of entry:

New York and Houston, Texas. Others available by quotation.

Lead Time:

Allow 8-10 weeks for new production. Can usually get stock items within 2 weeks for Secaucus, NJ only.

Stock items:

1/4" and 3/8" in Secaucus, NJ.

New Items:

None

Prices:

Prices are delivered out of the warehouse, based on full mixed truckloads.

Note:

Other sizes and tinted antique are available by special order.

* Special Order required



Product Data Sheet



Product: **Thin Ribbed**

Type Code: **PP**

Description: This item goes under several names; some people refer to it as Thin Ribbed, Thin Reeded, Skytech or Corduroy. The ribs are about 1/8" wide - 8 per inch.
The 5/32" has not been tempered; the 1/4" has been successfully tempered.
Our Thin Ribbed 4mm in size 78 3/4 x126" is a very close match to the 65x126", but not exact.

Available thickness:	1/8"	5/32"	3/16"	1/4"	3/8"	1/2"	3/4"
Thickness Codes:		54		25			

Sizes/Packing

Size		52 x 84		65 x 126			
Lites/Case		40		19			
Size		65 x 85					
Lites/Case		40					
Size		78 3/4 x 126" *					
Lites/Case		34					

Packing: 4000 pound cases; 10-12 cases per container load.
Ports of entry: New York and Houston, Texas. Others available by quotation.
Lead Time: Allow 10 weeks for new production.
Stock Items: 5/32" and 1/4" in Secaucus, NJ and Tulsa.
Prices: Prices are delivered out of the warehouse, based on full mixed truckloads.

* Special Order required



Product Data Sheet

Product:

Cross Reeded

Type Code:

LP Small PK Large

Description:

Square box shape pattern is stocked in small and large patterns.

A medium pattern is available by special order.

Small Cross Reeded - boxes are about 1/2" x 1/2", Large - boxes are about 1" x 1"

Sometimes called Waffle glass or Checker Board glass.

Same price for either pattern. Both patterns can be tempered.

Available thickness:	1/8"	5/32"	3/16"	1/4"	3/8"	1/2"	3/4"
Thickness Code:		54					

Sizes/Packing

Size		65" x 85"					
Lites/Case		40					

Packing:

4000 pound cases; 10-12 cases per container load.

Ports of entry:

New York and Houston, Texas. Others available by quotation.

Lead Time:

Allow 10 weeks for new production.

Stock Items:

Both small and large cross reeded are stock items.

Prices:

Prices are delivered out of the warehouse, based on full mixed truckloads.



Product Data Sheet

Product: **Reeded**
Type Code: **WO**
Description: Reeded is used most often in shower doors, and interior glass applications. It can be easily tempered. The reeds are 1/2" wide.

Available thickness:	1/8"	5/32"	3/16"	1/4"	3/8"	1/2"	3/4"
Thickness Codes:		54		25			

Sizes/Packing

Size		63 1/2 x 100		52 x 84			
Lites/Case		37					
Size		60 x 100		60 x 100			
Lites/Case		50					

Packing: 4000 pound cases; 10-12 cases per container load.
Ports of entry: New York and Houston, Texas. Others available by quotation.
Lead Time: Allow 8 weeks for new production. We may be able to pick up stock locally if required.
Stock Items: 5/32" in Secaucus, NJ and Tulsa.
Prices: Prices are delivered out of the warehouse, based on full mixed truckloads.



Product Data Sheet

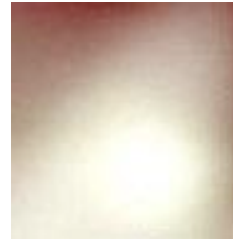
Product:

Satin Etched (Bronze, Grey, & Green)

Type Codes:

Description:

Acid etched tinted float glass with an extra smooth finish. Perfect for tempering and fabrication for commercial or shower door applications. The extra smooth finish is consistent throughout the sheet and does not pick up fingerprints, cutting oils, or cerium oxide. The perimeter of the glass (1/4" all around) is tinted glass (not etched).



Available thickness:	1/8"	5/32"	3/16"	1/4" _	3/8" _	1/2"	3/4"
Thickness Codes:				25	33		

Sizes/Packing

Size				88 1/2 x 126 _	88 1/2 x 126 _		
Lites/Case				18	11		
Size				78 3/4 x 126 _	78 3/4 x 126 _		
Lites/Case				21	12		

Packing:

4000 pound cases; 10 cases per container load.

Ports of entry:

New York and Houston, Texas. Others available by quotation.

Lead Time:

Allow 10 weeks for new production.

Stock items:

None

New Items:

We are considering adding 1/4" bz/grey/green to our stock in Secaucus, NJ. Feedback is appreciated.

Prices:

Prices are delivered out of the warehouse pricing, based on full mixed truckloads.

* Special Order required



Product Data Sheet

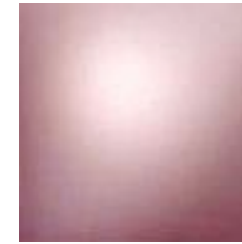
Product:

Satin Etched (Blue and Pink)

Type Codes:

Description:

Acid etched tinted float glass with an extra smooth finish. Perfect for tempering and fabrication for commercial or shower door applications. The extra smooth finish is consistent throughout the sheet and does not pick up fingerprints, cutting oils, or cerium oxide. The perimeter of the glass (1/4" all around) is tinted glass (not etched).



Available thickness:	1/8"	5/32"	3/16"	1/4" _	3/8" _	1/2"	3/4"
Thickness Codes:				25	33		

Sizes/Packing

Size				88 1/2 x 126 _	88 1/2 x 126 _		
Lites/Case				18	11		
Size				78 3/4 x 126 _	78 3/4 x 126 _		
Lites/Case				21	12		

Packing:

4000 pound cases; 10 cases per container load.

Ports of entry:

New York and Houston, Texas. Others available by quotation.

Lead Time:

Allow 10 weeks for new production.

Stock Items:

None

New Items:

We are considering adding 1/4" blue to our stock in Secaucus, NJ. Feedback is appreciated.

Prices:

Prices are delivered out of the warehouse pricing, based on full mixed truckloads.

* Special Order required



Product Data Sheet

Product: **Satin Etched Mirror**
Type Code: **MX**

Description: Satin etched float glass takes on a whole new decorative look when it is silvered. Looks like stainless steel. When you bevel the edges, the reflective clear mirror is restored along the bevel. The extra smooth finish is consistent throughout the sheet and does not pick up fingerprints, cerium oxide, or cutting oils. The perimeter of the mirror (1/4" all around) is not acid etched.

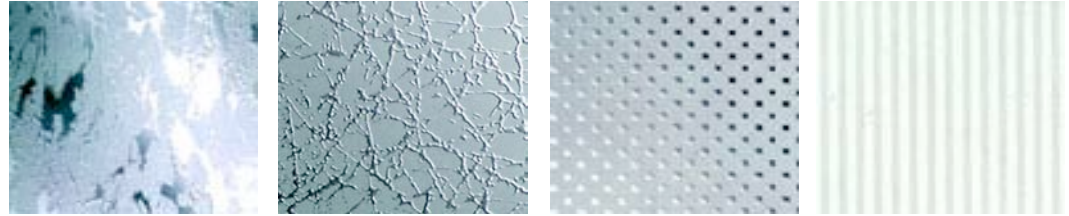
Available thickness:	1/8"	5/32"	3/16"	1/4"	3/8" _	1/2"	3/4"
Thickness Codes:				25			

Sizes/Packing

Size				88 1/2 x 126	88 1/2 x 126 _		
Lites/Case				22	11		
Size				78 3/4 x 126 _	78 3/4 x 126 _		
Lites/Case				21	12		

Packing: 4000 pound cases; 10 cases per container load.
Ports of entry: New York and Houston, Texas. Others available by quotation.
Lead Time: Allow 10 weeks for new production. Lead time is subject to change.
Stock Items: Arriving March 2003
Prices: Prices are delivered out of the warehouse, based on full mixed truckloads.

* Special Order required



Product Data Sheet

Product: Acid Etched Pattern Glass

Type Code:

Description: Acid etched glass in over 25 distinctive designs. Ideal for use in kitchen cabinets, furniture, doors, shower doors and partitions. The ones above are an example of some of the patterns. A color brochure is available with all patterns.

Available thickness:	1/8"	5/32" _	3/16" _	1/4" _	5/16" _	3/8"	1/2"
Thickness Code:		54					

Sizes/Packing

Size		63 x 88 1/2 _	63 x 88 1/2 _	63 x 88 1/2 _	63 x 88 1/2 _	63 X 88 1/2	
Lites/Case							

Packing: 4000 pound cases; 10-12 cases per container load.
Ports of entry: New York and Houston, Texas. Others available by quotation.
Lead Time: Allow 10 weeks for new production.
Stock Items: 3/8" Coral, Lines, Ice and Dots
Prices: Prices are delivered out of the warehouse, based on full mixed truckloads.

* Special Order required



Product Data Sheet

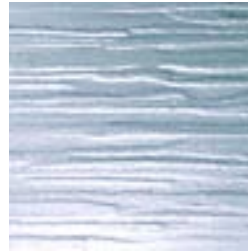
Product: **Monumental**
Type Code: ML
Description: This pattern is available in clear and in yellow tinted.

Available thickness:		5/32" Clear		5/32" Yellow			

Sizes/Packing

Size		65 x 85		65 x 85			
Lites/Case		40		40			

Packing: 4000 pound cases; 10/12 cases per container load.
Ports of entry: New York and Houston, Texas. Others available by quotation.
Lead Time: Allow 10 weeks for new production.
Stock Items: 4mm clear and yellow in Tulsa.
Prices: Prices are delivered out of the warehouse, based on full mixed truckloads.



Product Data Sheet

Product: **Cotswold™**
Type Code: **W7**
Description: Similar but not exact to Rain™.
 Used mostly for shower doors, this product can be easily tempered.
 Cotswold has a high level of obscurity.

Available thickness:	1/8"	5/32"	3/16"	1/4"	3/8"	1/2"	3/4"
Thickness Code:		54					

Sizes/Packing

Size		52 x 84			55 x 120		
Lites/Case		30			15		

Packing: 4000 pound cases; 10-12 cases per container load.
Ports of entry: New York and Houston, Texas. Others available by quotation.
Lead Time: Allow 10 weeks for new production.
Stock Items: 4mm in Secaucus
Prices: Prices are delivered out of the warehouse, based on full mixed truckloads.



Product Data Sheet

Product: Flemish™

Type Code: WG

Description: Flemish pattern replicates the look of hand blown glass. This antique effect gives a distorted vision through the glass allowing some privacy. Flemish does not have the seeds and bubbles normally associated with antique glass.

Available thickness:		5/32"					
Thickness Code:		54					

Sizes/Packing

Size		52 x 84					
Lites/Case		30					

Packing: 4000 pound cases; 10-12 cases per container load.

Ports of entry: New York and Houston, Texas. Others available by quotation.

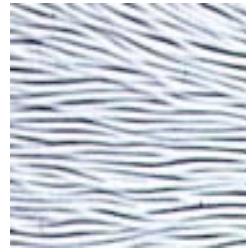
Lead Time: Allow 10 weeks for new production.

Stock Items: 4mm in Secaucus

Prices: Prices are delivered out of the warehouse, based on full mixed truckloads.



Product Data Sheet



Product:

Chinchilla

Type Code:

CC

Description:

Chinchilla pattern glass looks like Chinchilla hair. Not quite as soft but it is hypoallergenic!
This is a high quality easy to temper product.

Available thickness:	1/8"	5/32"	3/16"	1/4"	3/8"	1/2"	3/4"
Thickness Code:		54					

Sizes/Packing

Size		63 3/8 x 83 3/4					
Lites/Case		48					

Packing:

4000 pound cases; 10-12 cases per container load.

Ports of entry:

New York and Houston, Texas. Others available by quotation.

Lead Time:

Allow 10 weeks for new production.

Stock Items:

4mm in Secaucus

Prices:

Prices are delivered out of the warehouse, based on full mixed truckloads.



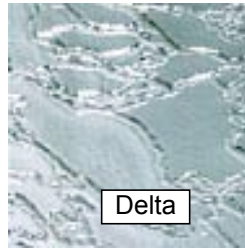
Product Data Sheet

Product: **Delta Frost**

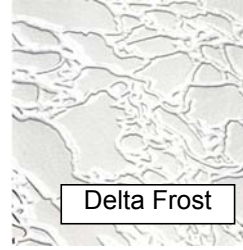
Type Codes:

Description:

Delta Frost™ is a popular pattern which should not be confused with Delta™ pattern. Delta Frost™ is much cheaper than Delta and is a sandblasted Delta™ pattern.



DQ



DD

Available thickness:	1/8"	5/32"	3/16"	1/4"	3/8"	1/2"	3/4"
Thickness Code:		54					

Sizes/Packing

Size		63 3/8 x 83 3/4					
Lites/Case		45					

Packing:

4000 pound cases; 10-12 cases per container load.

Ports of entry:

New York and Houston, Texas. Others available by quotation.

Lead Time:

Allow 10 weeks for new production.

Stock Items:

4mm Delta Frost and Delta in Secaucus and Tulsa.

Prices:

Prices are delivered out of the warehouse, based on full mixed truckloads.



Product Data Sheet

Product:

Glue Chip

Type Codes:

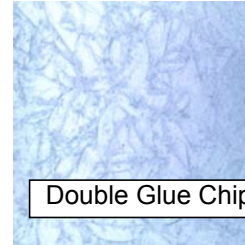
GC

Description:

Glue Chip is made by applying special glue to glass and letting it dry on the glass. Single glue chip has one application of glue and adds a fern pattern to glass with some clear areas. Double Glue has 2 applications of glue and has a fully obscured "chipped" look.



Single Glue Chip



Double Glue Chip

Available thickness:	1/8" (3.2mm)	5/32"	3/16"	1/4"	3/8"	1/2"	3/4"
Thickness Code:							

Sizes/Packing - for Single Glue Chip

Size	48 x 84		48 x 84	48 x 84			
Lites/Case	100		60	50			

Packing:

4000 pound cases; 10-12 cases per container load.

Ports of entry:

New York and Houston, Texas. Others available by quotation.

Lead Time:

Allow 10 weeks for new production.

Stock Items:

Secaucus and Tulsa

Prices:

Prices are delivered out of the warehouse, based on full mixed truckloads.

**** Double Glue Chip is a Special Order.**



Product Data Sheet

Product: **Niagara**
Type Code: RN
Description: Looks very similar to Rain™. Used for shower doors and glazing.
 This quality product can be tempered easily.

Available thickness:	1/8"	5/32"	3/16"	1/4"	3/8"	1/2"	3/4"
Thickness Code:			56				

Sizes/Packing

Size			60 x 84"		72 x 96		
Lites/Case			50		19		

Packing: 4000 pound cases; 10-12 cases per container load.
Ports of entry: New York and Houston, Texas. Others available by quotation.
Lead Time: Allow 10 weeks for new production.
Stock Items: 4mm in Secaucus and Tulsa
Prices: Prices are delivered out of the warehouse, based on full mixed truckloads.



Product Data Sheet

Product: **Warwick™**
Type Code: **WK**
Description: This pattern offers a unique old fashioned look and limited obscurity.

Available thickness:	1/8"	5/32"	3/16"	1/4"	3/8"	1/2"	3/4"
Thickness Code:		54					

Sizes/Packing

Size		52 x 84					
Lites/Case		49					

Packing: 4000 pound cases; 10-12 cases per container load.
Ports of entry: New York and Houston, Texas. Others available by quotation.
Lead Time: Allow 10 weeks for new production.
Stock Items: 4mm in Secaucus
Prices: Prices are delivered out of the warehouse, based on full mixed truckloads.



Product Data Sheet

Product: 1/4" Mirror

Type Code: M3

Description: 1/4" clear mirror made in Turkey. High quality float glass coupled with an ultra modern German mirror line, which applies two coats of paint, make an excellent and easy to fabricate product.

Available thick:	1/8" _	5/32" _	3/16" _	1/4"	3/8" _	1/2" _	3/4" _
Thickness Code:				25			

Sizes/Packing

<u>Size</u>	<u>Pcs/Case</u>	<u>Size</u>	<u>Pcs/Case</u>
48 x 100	34	48 x 126	28
60 x 100	32	60 x 126	22
72 x 100	27	72 x 126	19
84 x 100	23	84 x 126	16

Packing: 4000 pound cases; 10-12 cases per container load.
Ports of entry: New York and Houston, Texas. Others available by quotation.
Lead Time: Allow 8-10 weeks for new production.
Stock Items: 1/4" in Secaucus, NJ.
New Items: None
Prices: Prices are delivered out of the warehouse, based on full mixed truckloads.

* Special Order required



Product Data Sheet

Product: **Laminated**

Type Codes: **L8** (600 Sq.Ft.) **L9** (1000 Sq.Ft.) **WL** (WHITE LAMI)

Description: Laminated safety glass is made from two pieces of float glass with an .030" pvb interlayer. Each piece is marked indicating Ansi z97.1-1984 Safety glass approval.

Available thick:	1/8" _	5/32"	3/16"	1/4" Clear	3/8" Clear	1/2" Clear _	1/4" White _	3/8" White _	1/2" White _
Thickness Codes:									

Sizes/Packing

1/4" Clear Laminated

Size	pcs/cs
28x80	84
33x78	73
34x80	69
36x84	62
36x96	54
40x80	59
42x84	53
48x84	46

1/4" Clear Lami (continued)

Size	pcs/cs
48x96	41
48x120	33
60x96	33
60x120	26
72x96	27
72x120	22
80x120	20
84x120	19

3/8" Clear Lami

Size	pcs/cs
48x126	20
60x126	15
72x126	13
84x126	12
<u>1/2" Clear Laminated</u>	
72x126 _	10
84 x 126 _	9
<u>1/8" Clear Lami</u>	
36 x 70 _	94

1/4" White Lami

Size	pcs/cs
48x84 _	57
48x96	50
60x96	40
<u>3/8" White Lami</u>	
48x126 _	17
72x126 _	11
84x126 _	9

1/2" White Lami

Size	Pcs/Case
72x126 _	10
84x126 _	8

Packing: 4000 pound cases; 10 cases per container load.

Ports of entry: New York and Houston, Texas. Others available by quotation.

Lead Time: Allow 10 weeks for new production. Lami is always in production and enroute so faster lead times are possible.

Stock Items: 1/4" Clear Lami in Secaucus, NJ.

New Items: 1/4", 3/8" and 1/2" White Lami; 3/8" and 1/2" Clear Lami in Secaucus.

Prices: Prices are delivered out of the warehouse, based on full mixed truckloads.

* Special Order required



Product Data Sheet

Product:

Anti-Reflective Clearview

Type Codes:

Description:

AR Clearview optically coated clear glass eliminates annoying glare and provides nearly reflection free viewing. Its high light transmission and contrast enhancement are other benefits. This product can be tempered only by our trained and certified fabricators.

This product is also used in architectural applications to increase security and safety. For example, the cashiers' windows in a convenience store overlooking the gas pumps could be glazed with AR Clearview to allow the cashier an excellent view of the pumps even at night.

Available thick:	1/8" _	5/32" _	1/4"	5/16" _	3/8" _	1/2" _
Thickness Code:						

Sizes/Packing

Size		48x84 _	48x84	48x84 _	48x84 _	48x84 _
Lites/Case		16	10	8	8	4

Packing:

1000 pound cases; packed 3 cases per master crate.

Lead Time:

Allow 4 weeks for new production.

Stock Items:

1/4" in Secaucus, NJ.

Prices:

Prices are delivered out of the warehouse, based on full mixed truckloads.

* [Special Order](#) required



Product Data Sheet

Product: **Anti-Reflective Clearview Waterwhite**

Type Codes:

Description: Optically coated low iron glass eliminates annoying glare and provides 99% reflection free viewing and 98% light transmission.
True vivid color viewing of objects through the glass is now a reality.
This product can be tempered only by our trained and certified fabricators.

Available thick:		1/8" _	5/32" _	1/4" _	5/16"	3/8" _	1/2" _
Thickness Code:							

Sizes/Packing

Size		48x84 _	48x84 _	48x84	48x84 _	48x84 _	48x84 _
Lites/Case		16	10	8	8	4	4

Packing: 1000 pound cases; 3 cases per master crate.

Lead Time: Allow 4 weeks for new production.

Stock Items: 1/4" in Secaucus, NJ.

Prices: Prices are delivered out of the warehouse, based on full mixed truckloads.

* Special Order required